



Eddie Bauer® Ladies Sweater Fleece Full-Zip. EB251



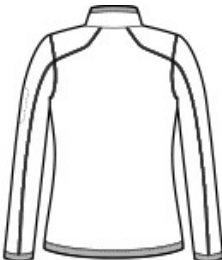
With an authentic outdoorsy lodge look, this refined sweater fleece delivers serious comfort. Smooth-faced and brushed-back for warmth, these anti-pill styles also have stretch for easy movement. Woven fabric details add sophistication. Cadet collar, exposed coil zippers, open cuffs and open hem. Front zippered pockets, zippered left sleeve pocket and embroidered Eddie Bauer contrast logo on the right hem. Made of 8.1-ounce, 100% polyester sweater fleece with 86/14 polyester/spandex woven trim. Produced using Low Impact Technology (L.I.T.™), which uses less dyes, thermal energy and water for enhanced softness, performance and after-care quality.

CARE INSTRUCTIONS

Machine Wash Cold, Inside Out With Like Colors, Do Not Use Fabric Softener, Only Non-Chlorine Bleach When Needed, Tumble Dry Low, Do Not Iron, Do Not Dry Clean.



front



back

HOW TO MEASURE



BUST
Measure under the arm and around the fullest part of the bust with arms down, keeping tape horizontal.

SIZE CHART

| | XS | S | M | L | XL | 2XL | 3XL | 4XL |
|------|-------|-------|-------|-------|-------|-------|-------|-------|
| Size | 2 | 4/6 | 8/10 | 12/14 | 16/18 | 20/22 | 24/26 | 28/30 |
| Bust | 32-33 | 34-35 | 36-37 | 38-40 | 41-43 | 44-46 | 47-49 | 50-52 |

COLOR INFORMATION



Black
PMS NTR BLACK
C



Dark Grey Heather
PMS COOL GRAY
11C



River Blue Navy
Heather
PMS 533C