

# Port Authority® Ladies Long Sleeve Easy Care Shirt. L608

This comfortable wash-and-wear shirt is indispensable for the workday. Wrinkle resistance makes this shirt a cut above the competition so you and your staff can be, too.

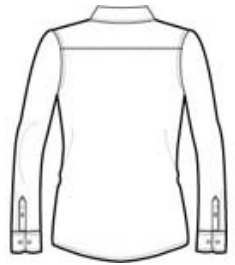
- 4.5-ounce, 55/45 cotton/poly
- Traditional, relaxed look
- Open collar
- Dyed-to-match buttons
- Adjustable cuffs
- White, Athletic Gold, Texas Orange, Red, Burgundy, Coffee Bean, Light Blue, Navy, Classic Navy, Steel Grey, Purple and Black have a Light Stone contrast neckband.
- Light Stone and Royal have a Classic Navy contrast neckband.
- Dark Green has a Navy contrast neckband.

**CARE INSTRUCTIONS**

Machine wash warm with like colors. Only non-chlorine bleach when needed. Tumble dry low. Warm iron if necessary.



front



back

**HOW TO MEASURE**



**BUST**

Measure under the arm and around the fullest part of the bust with arms down, keeping tape horizontal.

**ARM**

Place hand on hip. Start at the center of the back of the neck and measure across the shoulder, to the elbow, and then down to the wrist.

**SIZE CHART**

	XS	S	M	L	XL	XXL	3XL	4XL	5XL	6XL
Size	2	4/6	8/10	12/14	16/18	20/22	24/26	28/30	32/34	36/38
Bust	32-34	35-36	37-38	39-41	42-44	45-47	48-51	52-55	56-59	60-63
Arm	30-30 3/4	30 3/4-31 1/2	31 1/2-32	32-32 1/2	32 1/2 - 33	33-33 3/8	33 3/8-33 3/4	33 3/4-34 1/2	34 1/4-34 3/4	34 1/2-35

**COLOR INFORMATION**

Black/ Light Stone PMS NTR BLACK C	Burgundy/ Light Stone PMS 7428C	Classic Navy/ Light Stone PMS 433C	Clover Green PMS 7763C	Court Green PMS 7724C	Dark Green/ Navy PMS 5467C	Deep Berry PMS 7650C	Hibiscus PMS 2348C	Light Blue/ Light Stone PMS 7451C	Light Pink PMS 196C	Light Stone/ Classic Navy PMS 9202C
Maui Blue PMS 2200C	Mediterranean Blue PMS 2118C	Navy/ Light Stone PMS 533c	Purple/ Light Stone PMS 7679C	Red/ Light Stone PMS 187C	Royal/ Classic Navy PMS 7687 C	Steel Grey/ Light Stone PMS 7540C	Stone PMS NO MATCH	Strong Blue PMS 2133C	Teal Green PMS 7715C	Texas Orange/ Light Stone PMS 7584C
Tropical Pink	Ultramarine Blue	White/ Light Stone								

