



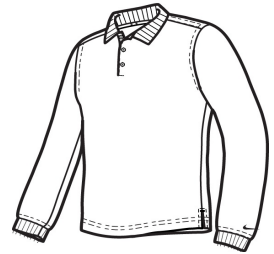
# Nike Long Sleeve Dri-FIT Stretch Tech Polo. 466364



Long sleeves elevate this polo to another level of sophistication while Dri-FIT moisture management technology adds unparalleled performance. Stretch fabric for hassle-free swinging motion. Flat knit collar and cuffs. Heat transfer label for tag-free comfort. Three-button placket. Dyed-to-match buttons on White, Black and Midnight Navy. White buttons on Varsity Red, Anthracite and Blue Sapphire. The contrast Swoosh design trademark is embroidered on the lower left sleeve. Side vents. Made of 5-ounce, 100% polyester Dri-FIT fabric.

### CARE INSTRUCTIONS

Machine wash cold. Wash inside out; wash with like colors. Do not use softeners. Do not use bleach. Tumble dry low. Do not iron. Do not dry clean.



front



back

### HOW TO MEASURE



#### CHEST WIDTH

Measure under the arm and around the fullest part of the chest with arms down, keeping tape horizontal.

### SIZE CHART

	XS	S	M	L	XL	2XL	3XL	4XL
Chest Size (inches)	32-35	35 - 37 1/2	37 1/2 - 41	41 - 44	44 - 48 1/2	48 1/2 - 53 1/2	53 1/2 - 58	58 - 63

### COLOR INFORMATION



Anthracite  
PMS 432C



Black  
PMS PROCESS  
BLACK C



Blue Sapphire  
PMS 661C



Midnight Navy  
PMS 2767C



Varsity Red  
PMS 704C



White  
PMS NO MATCH